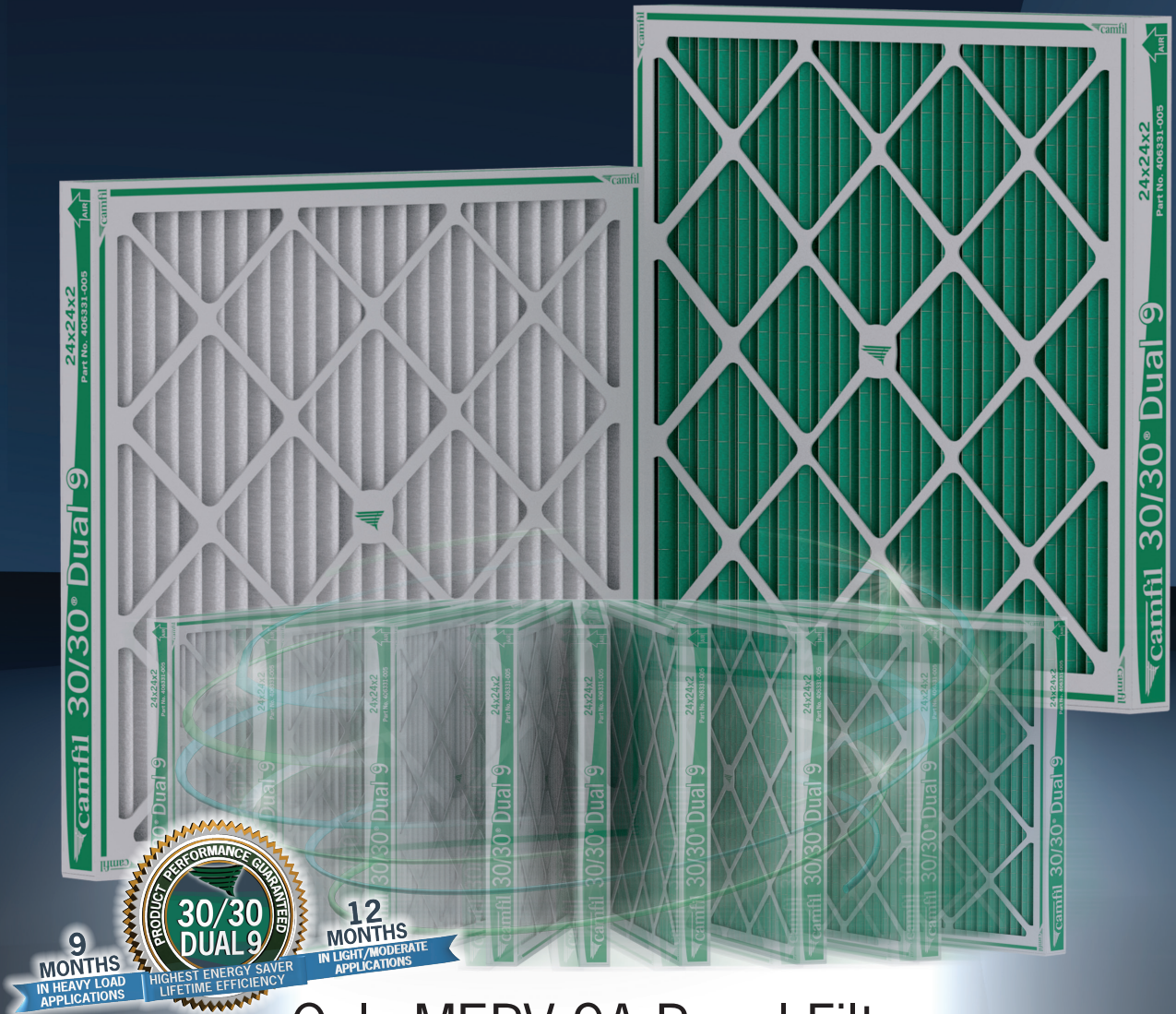




30/30[®] Dual 9

High Capacity MERV 9/9A and ePM₁₀ - 55 Pleated Panel Air Filter

Camfil has reinvented an entire product category



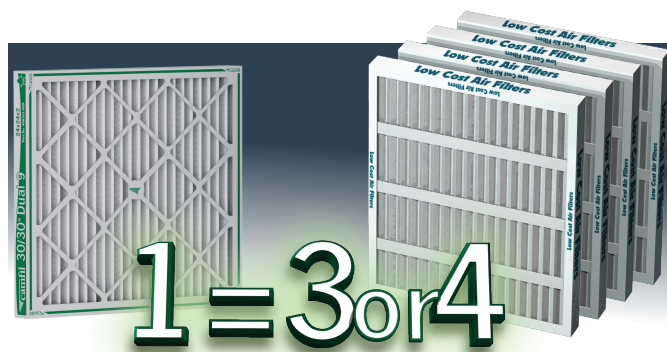
Only MERV 9A Panel Filter
Guaranteed to Last 9 - 12 Months

CLEAN AIR SOLUTIONS

DUAL 9 SETS A NEW STANDARD IN THE AIR FILTRATION INDUSTRY. This is a Game Changer.

What is Dual 9?

Dual 9 is a breakthrough product where every component has been engineered to deliver the highest level of continuous particle removal, with the lowest energy consumption and longest service life. The Dual 9 comes with dual but equal MERV ratings (MERV 9 and MERV 9A), a dual layered gradient density media and dual performance guarantee options of 9 or 12 months.



Camfil, the First Innovator is still the Only Innovator.

Camfil asked users what they wanted in pleated panel filters and three objectives stood out:

1. Longest possible service life to reduce the need for frequent filter changes thus saving labor resources for more critical maintenance projects.
2. Reduced energy consumption in line with corporate cost saving and sustainability objectives.
3. Improved filtration for better protection of HVAC equipment — reduces the need for coil and system cleaning by 25%-50% compared to lower efficiency MERV 8 and MERV 7 solutions.



Built Strong

Designed to withstand turbulent or harsh airflow that may be common in some HVAC systems.

Welded Steel Grid with Corrosion Inhibitor

A crossed wire grid, spot welded on one inch centers, provides industrial grade support to hold pleat formation throughout service life.

Proprietary Dual High Lofted Fibers

New media technology - Dual layered media combines two filtration layers in one package. Upstream white layer designed for larger particles and downstream green layer designed for finer particles. Combined solution provides a dust holding capacity 4 times higher than general commercial grade pleats.

Radial Pleats

Radial pleats expose all of the media area to the dirty airstream providing lower pressure drop and higher dirt holding capacity.

Diagonal Support

Diagonal support members bonded to the media maintain pleat separation and ensure filter rigidity.

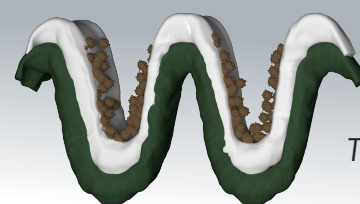
Moisture Resistant Frame Board

28-point high wet-strength frame board is resistant to moisture and has a high tensile strength.

Available in 1", 2" and 4" Depths

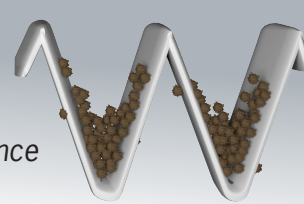
For every Dual 9 filter, it will take three or four low cost pleated filters — waste disposal, landfill impact and transaction costs. At the same time significant reduction in energy consumption per year up to 25% per filter opening while having MERV9A efficiency (per ASHRAE standard 52.2 Appendix J). This filter also has an efficiency of ePM₁₀ - 55 when tested per ISO air filter testing standard 16890.

Camfil's Dual 9 Pleat VS Competitors' V-Pleat



30/30® Dual 9 Pleat High Lofted Dual Media

- Gradient density, mechanical filtration media



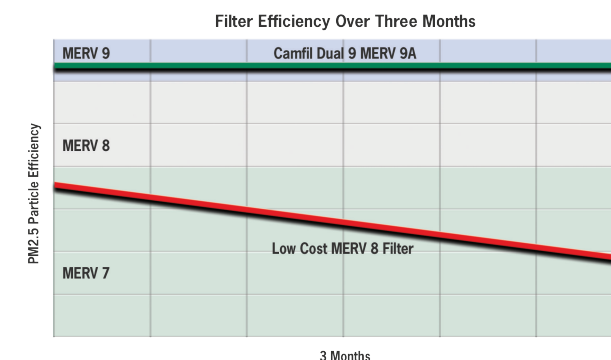
Competitors' V-Pleat Coarse Fiber

- Utilizes electrostatically enhanced media
 - Short service life, high energy consumption and particle capture degradation below rated efficiency.

The difference is clear.

We Guarantee It!

Don't think it's too good to be true! Camfil was the first air filtration manufacturer to offer a written performance guarantee on product performance and now we have raised the bar to the highest level ever — providing our customers the highest "Total Cost of Ownership" value proposition with *no risk*.



Area between the efficiency lines reflects particulate passing through the filter, collecting on secondary filters, heating and cooling coils, all hinder total ventilation operating efficiency.

Built to last. Tested for proof.

30/30® Dual 9 media is manufactured from a proprietary blend of fine fibers utilizing a mechanical particle capture principle.

The Dual 9 media was put through three years of real life testing to ensure performance under real life conditions and to establish the only guarantee of its kind. Highest energy saver, lifetime efficiency, and lasts 9 to 12 months...*Guaranteed!*

The electret charge of the competitors' coarse fiber filters dissipates over time resulting in a loss of efficiency long before what should be a full life cycle.



5-Star ECI Rating

Camfil's filters are rated as 5-Star filters through the Energy Cost Index (ECI) program. Based upon a five-star scale, the Energy Cost Index is an indicator of what a filter will cost over its lifetime. The best rating – five stars – indicates that the filter is the most energy-efficient, longest lasting filter available.



1" Nominal depth Initial resistance (inches w.g.) 0.24" 16 Pleats per linear foot			
Part Number	Nominal Size	Airflow Capacity (cfm)	Media Area (sq ft.)
406330025	12x12	350	2
406330019	16x16	620	4
406330008	20x10	480	3
406330007	20x12	580	4
406330009	20x14	680	5
406330011	20x15	720	5
406330001	20x16	770	5
406330013	20x18	870	6
406330002	20x20	970	7
406330026	20x30	1450	10
406330027	22x22	1170	8
406330028	24x10	580	4
406330006	24x12	700	5
406330029	24x14	810	6
406330016	24x16	930	6
406330015	24x18	1050	7
406330012	24x20	1160	8
406330005	24x24	1400	10
406330030	25x10	600	4
406330031	25x12	720	5
406330010	25x14	850	6
406330020	25x15	910	6
406330004	25x16	970	7
406330014	25x18	1090	8
406330003	25x20	1210	8
406330018	25x25	1510	10

2" Nominal depth Initial resistance (inches w.g.) 0.30" 15 Pleats per linear foot			
Part Number	Nominal Size	Airflow Capacity (cfm)	Media Area (sq ft.)
406331099	12x12	500	4
406331019	16x16	880	8
406331022	16x25	1380	12
406331024	18x18	1120	10
406331008	20x10	690	6
406331007	20x12	830	7
406331009	20x14	970	8
406331011	20x15	1040	9
406331001	20x16	1110	10
406331013	20x18	1250	11
406331002	20x20	1380	12
406331023	20x24	1660	15
406331021	20x25	1730	15
406331026	20x30	2080	18
406331006	24x12	1000	8
406331016	24x16	1330	12
406331015	24x18	1500	13
406331012	24x20	1660	15
406331005	24x24	2000	17
406331010	25x14	1210	11
406331020	25x15	1300	11
406331004	25x16	1380	12
406331014	25x18	1560	14
406331003	25x20	1730	15
406331018	25x25	2170	19

4" Nominal depth Initial resistance (inches w.g.) 0.27" 11 Pleats per linear foot			
Part Number	Nominal Size	Airflow Capacity (cfm)	Media Area (sq ft.)
406332022	16x25	1380	19
406332001	20x16	1110	15
406332002	20x20	1380	19
406332023	20x24	1660	23
406332021	20x25	1730	24
406332006	24x12	1000	14
406332016	24x16	1330	18
406332015	24x18	1500	21
406332012	24x20	1660	23
406332005	24x24	2000	28
406332004	25x16	1380	19
406332003	25x20	1730	24
406332018	25x25	2170	30
406332020	25x29	2510	35



Unprecedented Industry Guarantee

We are so confident in our filter's performance, we are the only manufacturer that GUARANTEES our filters will hold their rated efficiency for their entire service life, 9 or 12 months based on the application. If our filters fail to hold a MERV 9 efficiency or fail to last 9 or 12 months, we'll replace them, FREE of charge.

Camfil GUARANTEES the 30/30 Dual 9 will last 9 months in heavy load applications and 12 months in light to moderate applications when operated at or below the rated airflow capacity for that filter. For guarantee details, visit www.camfil.us.

1 North Corporate Drive | Riverdale, NJ 07457
 Phone: 973.616.7300 | Fax: 973.616.7771
camfil@camfil.com
www.camfil.us

www.camfil.us

For further information, please contact your nearest Camfil office.